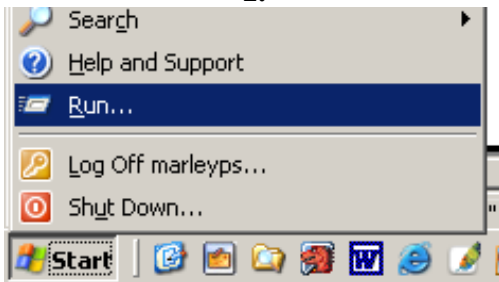


To connect with another computer on the Wake Forest Network

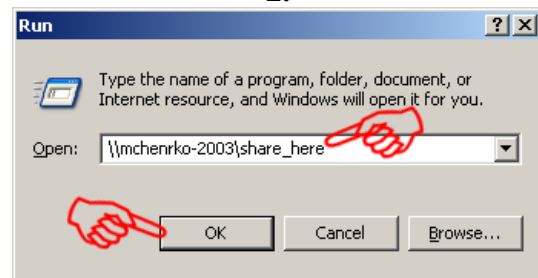
Note: a resource shared to you must exist on the computer you intend to connect to prior to this process!

1.



Start – Run

2.

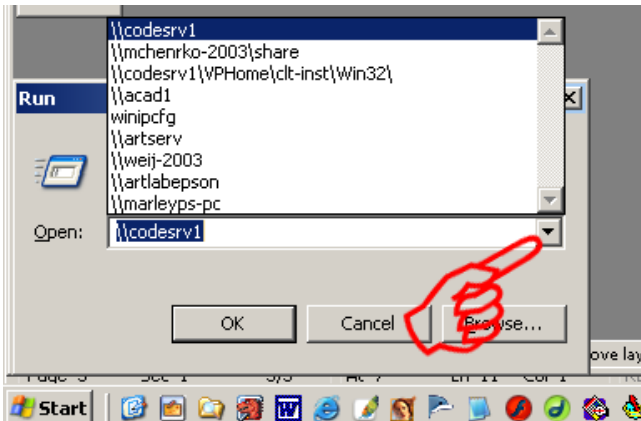


type \\machine name\shared resource (if known)
machine names are configured as such:
\\username-pc (A-30 Thinkpad, one w/floppy drive)
or
\\username-2003 (R-40 Thinkpad, no floppy)

Now that we are all on DEACNET computer associations with building names are no longer used!

If you do not know the specific name of the shared resource you will still see the folder as long as you are able to connect with the machine. Then just double click on the folder icon to open it.

2a.



The Run feature creates a list of network locations you visit so you never have to type the location name again. Just click on the little black triangle on the right of the field then

FYI

M. Herrin, D. Finn, V. Faccinto – A-30
All others – R-40

Userdata Back-up - \\ARTSERV

Lab scanning stations:

\\ARTLAB17
\\ARTLAB18

select where you want to go. Then click OK