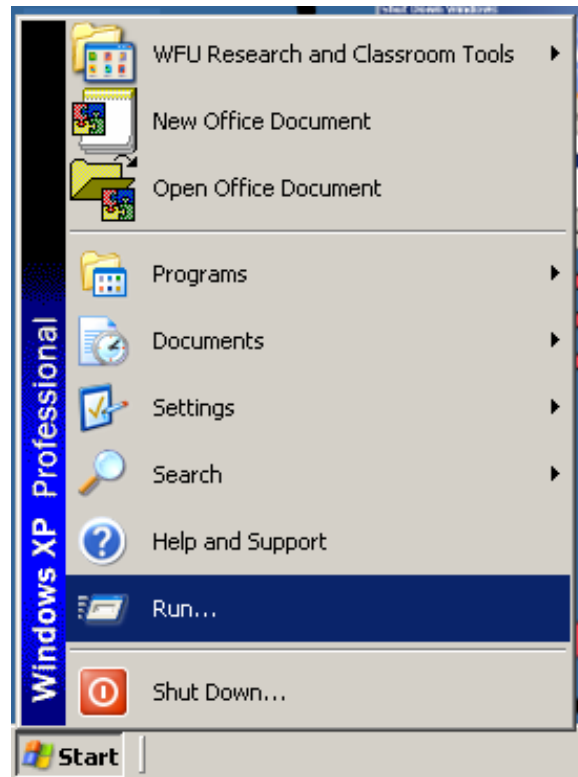
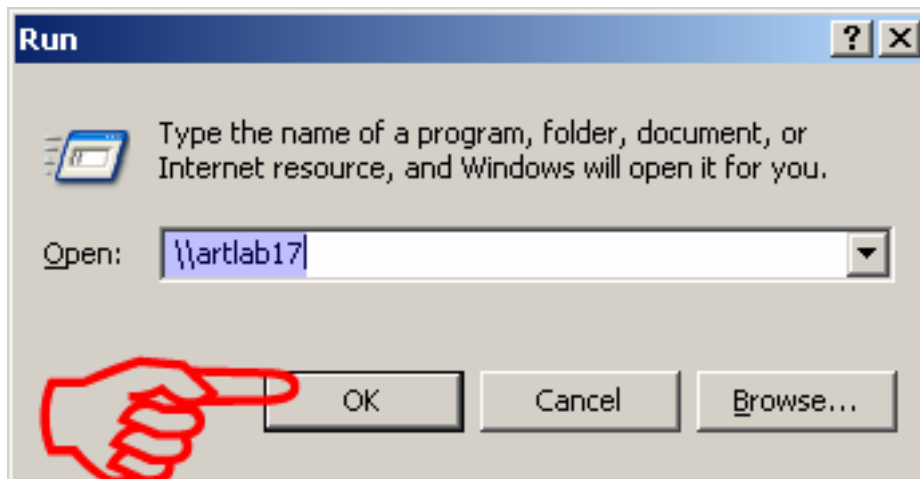


## Find other Digital Art Lab computers on Deacnet (and more)



**Start – Run....**

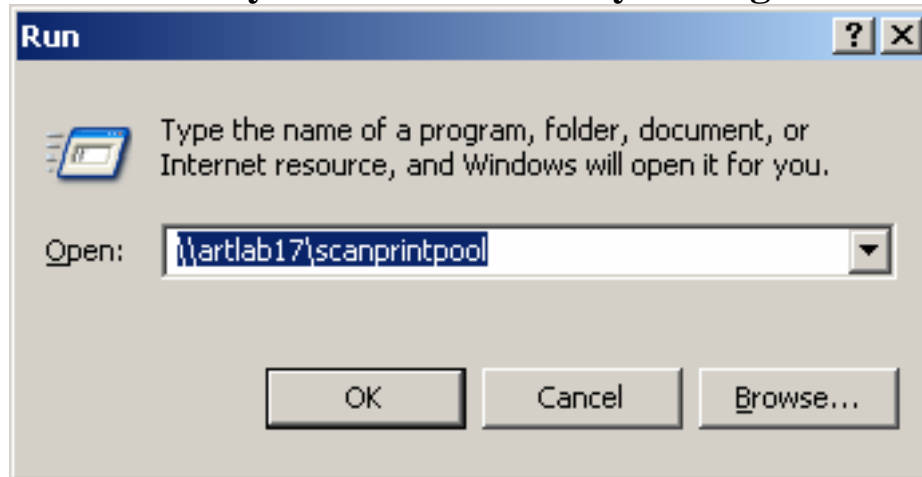


**Type - \\artlab\*\*  
And click “OK”**

**Cont...**

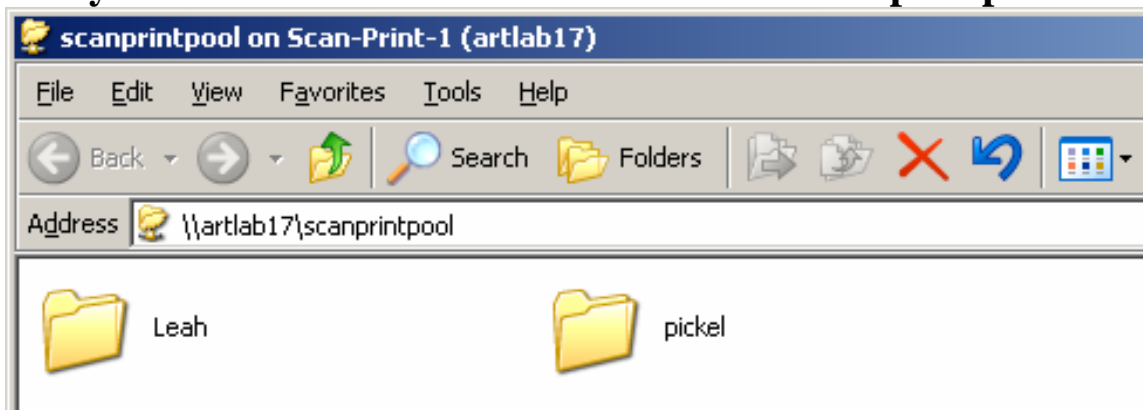
The computers\folder you are most likely to need to access are the two “scan and/or printpool” folders on the scan/print stations (ARTLAB18 - scanners, ARTLAB 17 printers)

You can directly access the folder by adding its name...



**\\artlab1\*\scan or printpool**

you will then see the sub-folders within scanprintpool.



**Please** keep these folders empty by deleting images after moving them to your workstation and again after making final prints.

You can access your Thinkpad by using the same process. Set a shared folder on your machine and use

**\\username-2005** (R-52 Thinkpad)

or

**\\username-2006** (T-60 Thinkpad)