

General Operation of the IMACON scanner ARTLABENCAD



Make sure you are logged into the machine as “**scanprint**”

Remember to save all files to the **scanprint pool** on DATA DRIVE (E:)

Make sure the scanner’s light above the red horizontal power button is on, if not press the power button so the light flashes green and then restart the computer, otherwise the computer will not recognize the scanner

Pull down the tray in the front of the scanner so it is perpendicular to the scanner. You will see a grid on a mini light table.

The IMACON scanner has three film holders in a white box. They are stainless steel with a magnetic flap and opening for both horizontal and vertical orientation. Choose the holder size for the film you are using

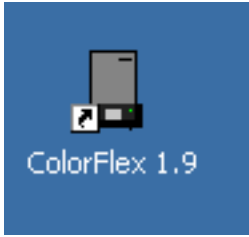
Place the film in the holder by lifting the magnetic flap up, putting the film on the holder emulsion side (dull finish) up, then laying the flap down to keep the film in place

Place the holder on the tray so you can read the word IMACON on the holder then press it gently to the back of the scanner. A magnet will grab it, but make sure it goes all the way back

The IMACON scanner has it’s own software interface. **DO NOT** try to IMPORT through Photoshop

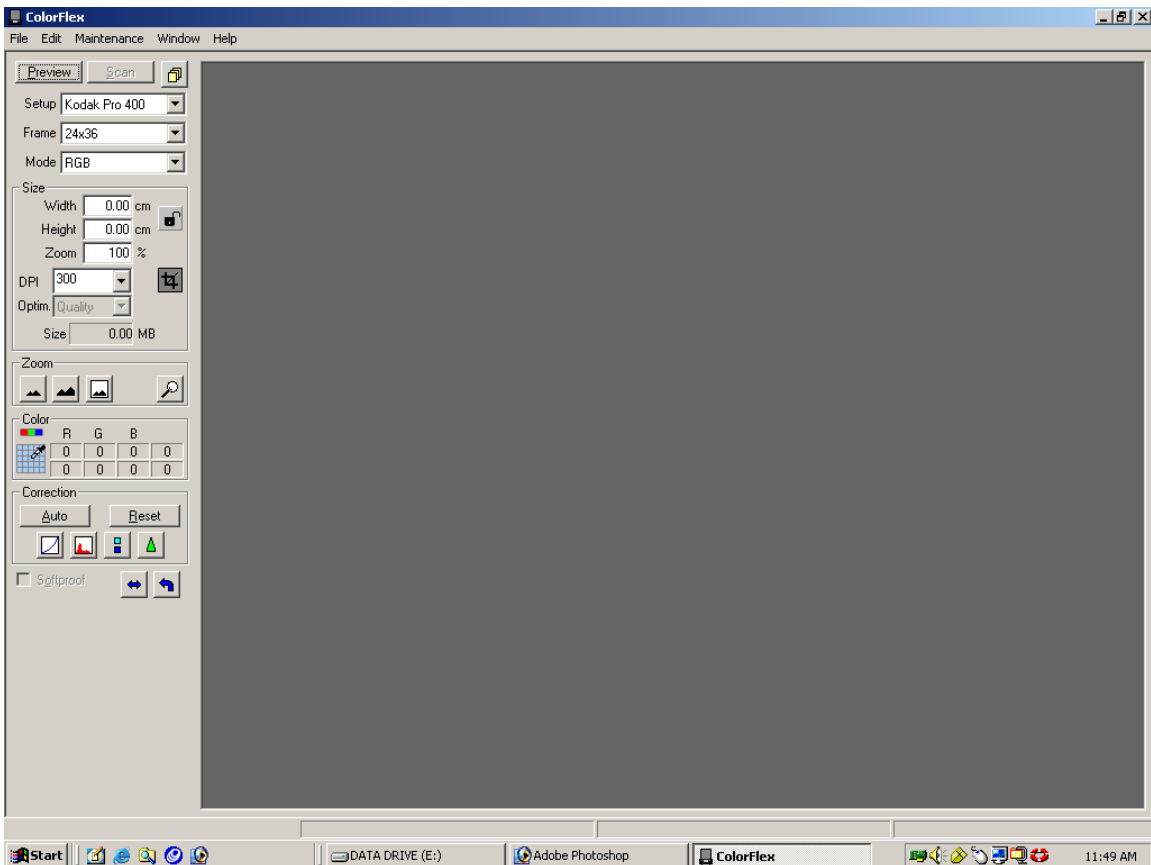
Cont....

Double Click on the



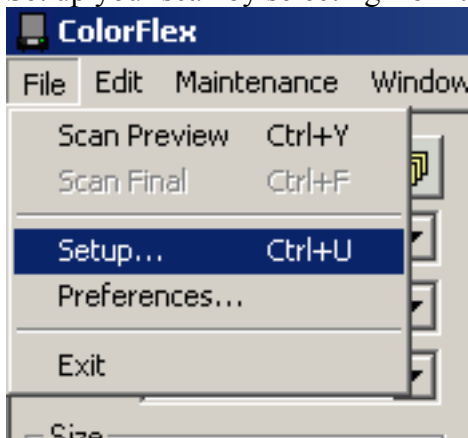
icon on the desktop

You will get this interface window

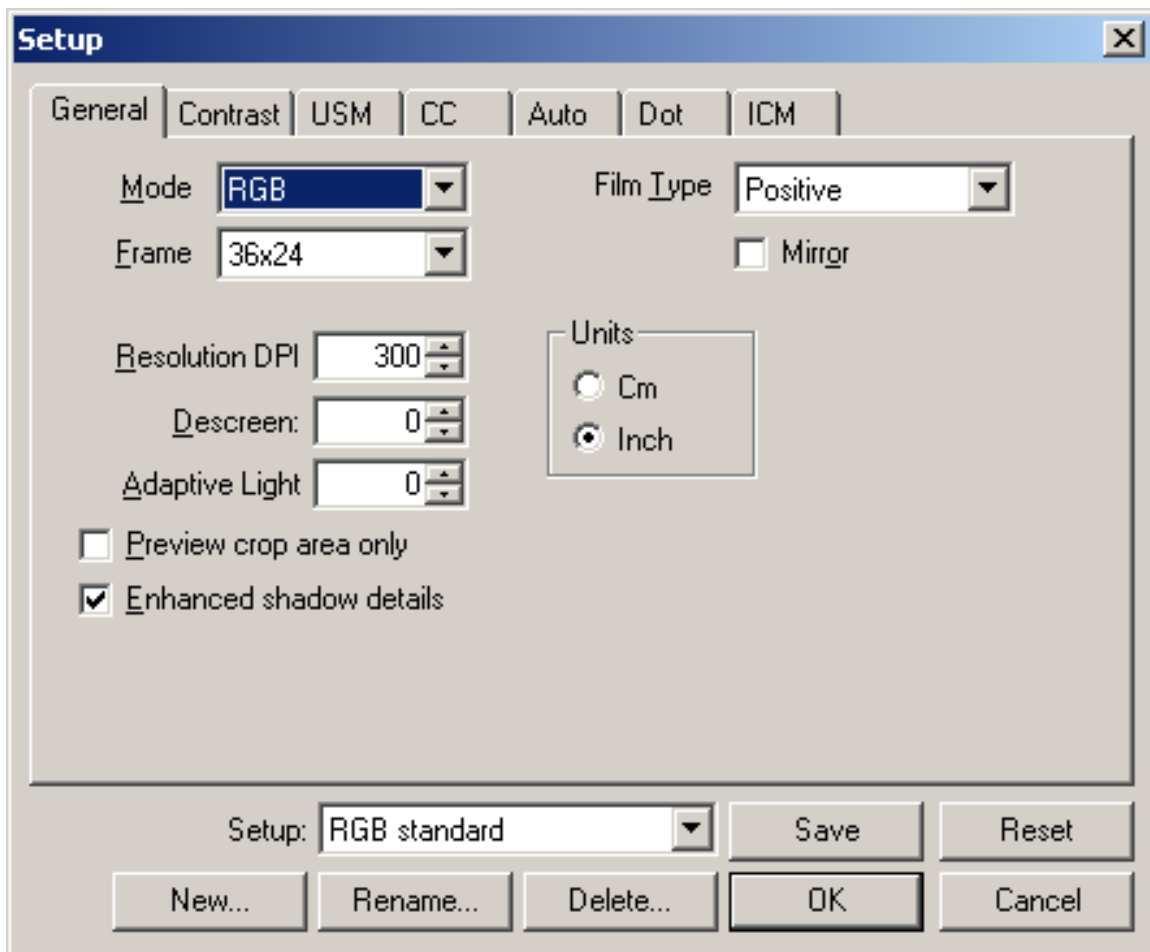


Cont....

Set up your scan by selecting from the pull down menu **File – Setup**



You will get this screen:

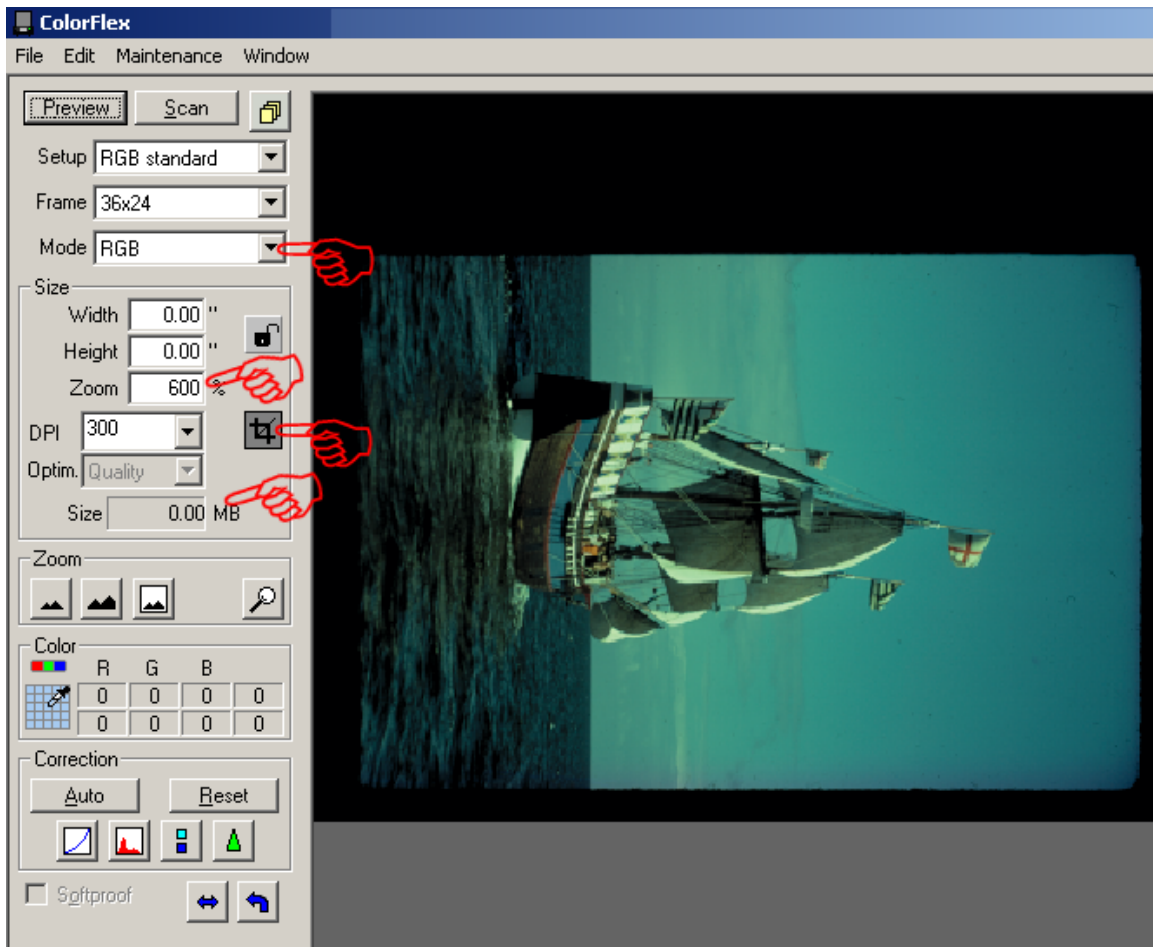


Mode – Keep at RGB

Frame – selects one of the two openings in the film holder (36X24) is the **Horizontal**
Resolution DPI – Recommend 300 DPI (dots per inch) or more depending on project
Units – inches (unless for some reason you prefer to work in metric)


Film Type – Positive for Transparencies – Color Negative for , B/W Negative for ...

Setup: sets a preset color profile for the brand of film you might be using. You can change it in another place if the scan looks bad (more later) Then click **OK** (cont...)



Mode – RGB, Grayscale ... what ever is right for your image
Click **Preview**



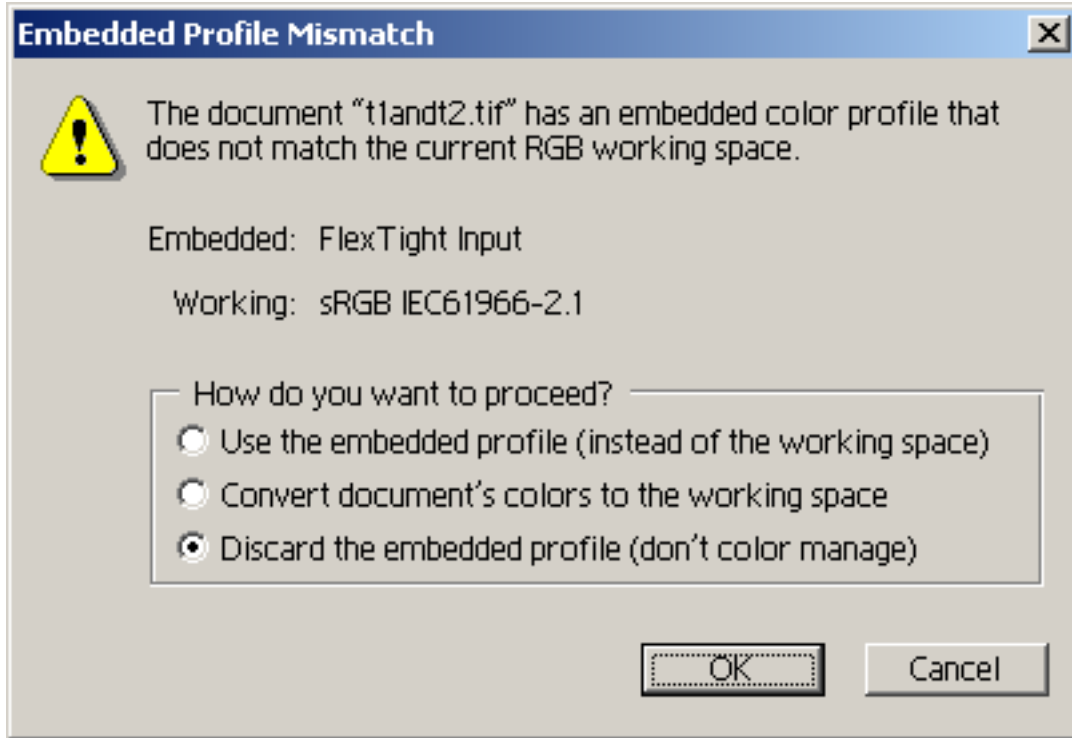
Then click  and draw a box around what you want scanned
Set the **Zoom** (enlargement) of your image and note the **Size** (MB) of the final file.

You are ready to **Scan!**

When Color Flex starts to scan it will prompt you to choose a name and location for your file (E: scanprintpool)

Cont....

After the scan is complete it will launch Photoshop and bring up your image. You will see this:



Click **OK**

Congratulations!

Pull your images to your workstation over the network.

If you are unsure how to do this visit:

http://www.wfu.edu/~marleyps/lab_stuff.htm

(How to find the Digital Art Lab machines in the WFU Network.pdf)

This machine is **ARTLABENCAD**

Check with Paul Marley to be sure you are set up with share permissions in the "pool".