

WebSite tips!

Set up a new folder on the DATADRIVE with your username (if you haven't already)

**Make a new folder inside that "www-home"
This is where ALL your web-ready elements will be stored.**

**Sketch out an outline of what you want your website to look like and what contents it will present.
(Planning and forethought required here)**

Things to cogitate:

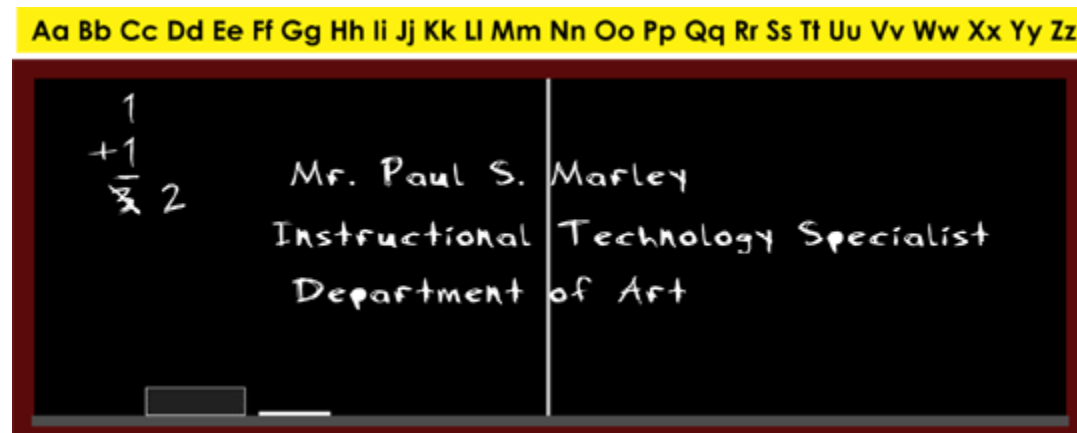
- 1. Site page size format (800X600; 1024X768)**
- 2. Table based design or not**
- 3. Menu items**
- 4. Page templates or free form**

Create your image, graphical and textual content using Photoshop, Freehand and MS Word according to the outline set up in the previous step. Make Photoshop images/graphics at Hires (300dpi) and Save as .tif files THEN reduce resolution to 72dpi and Save As .jpg (5 compressions) or .gif files. Keep dimensions within a reasonable size 6-7 inches X whatever.

.jpg is for photographic images



.gif is for hard color graphics



File Names:

Keep them short and sweet.

ALL LOWER CASE! (the Internet **IS** case sensitive)

No spaces or special characters (!,\$,% ^,&,* ~,/,\,=,+ , etc...)

Underscores and hyphens are the only exceptions!!

(header_image.jpg, photo-samples.htm)

NEVER USE PERIODS!!!!!!!!!!

One will always be placed automatically prior to the file extension.

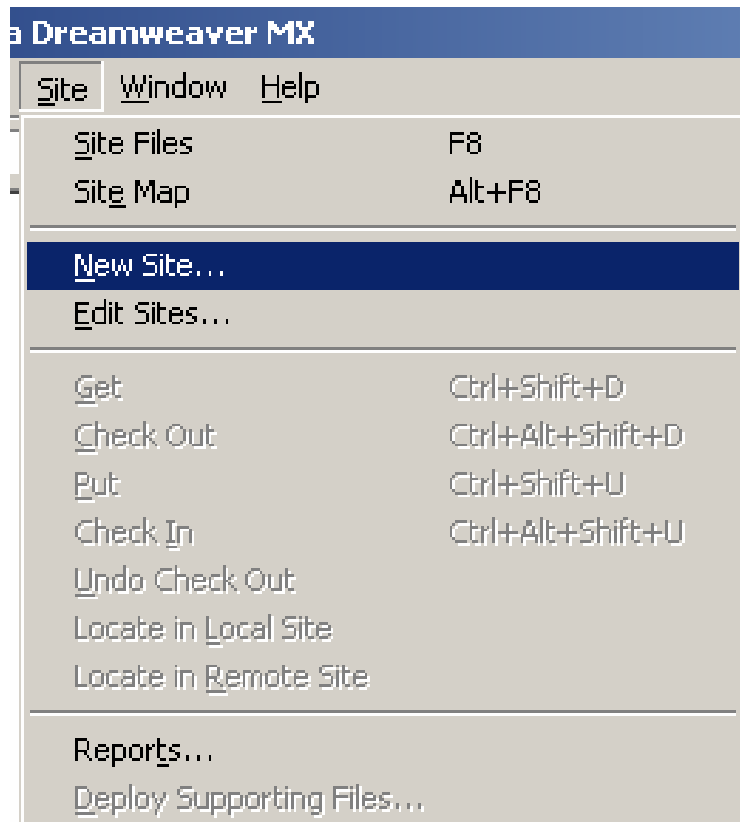
photo-samples.htm

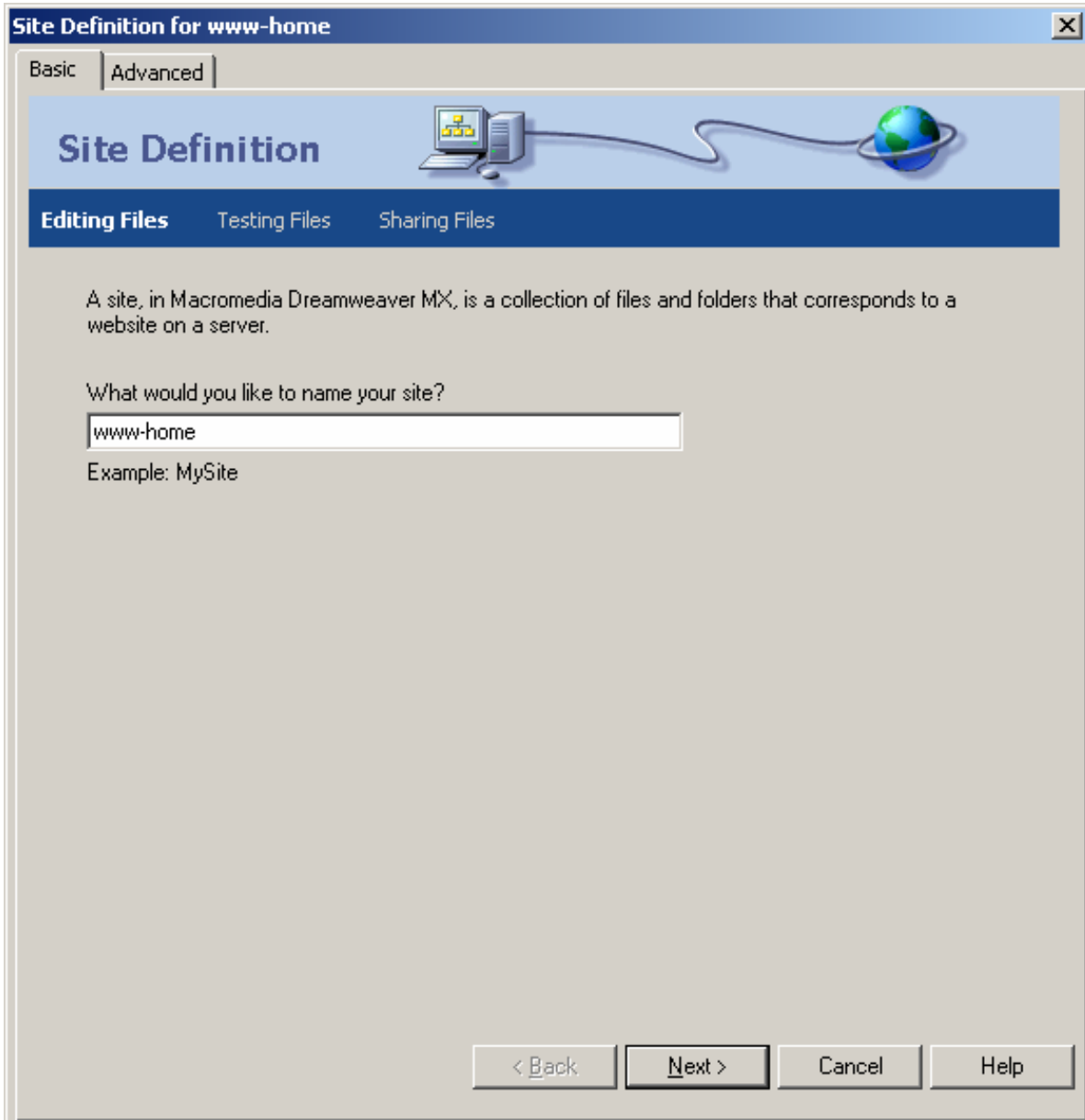
That is the only period that should be in a file name!

Home page set-up in DM-MX

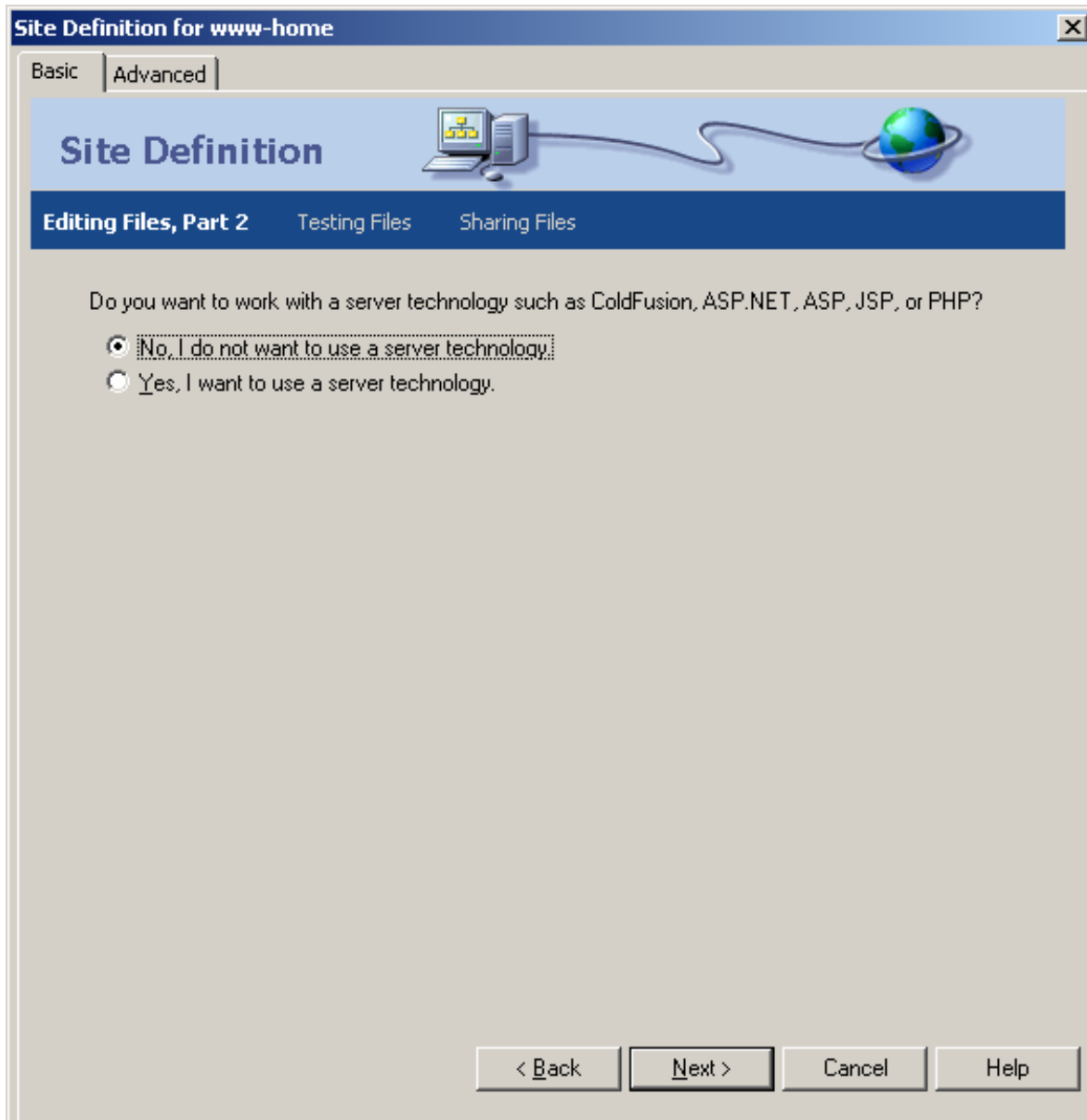
Open Dreamweaver

Then:

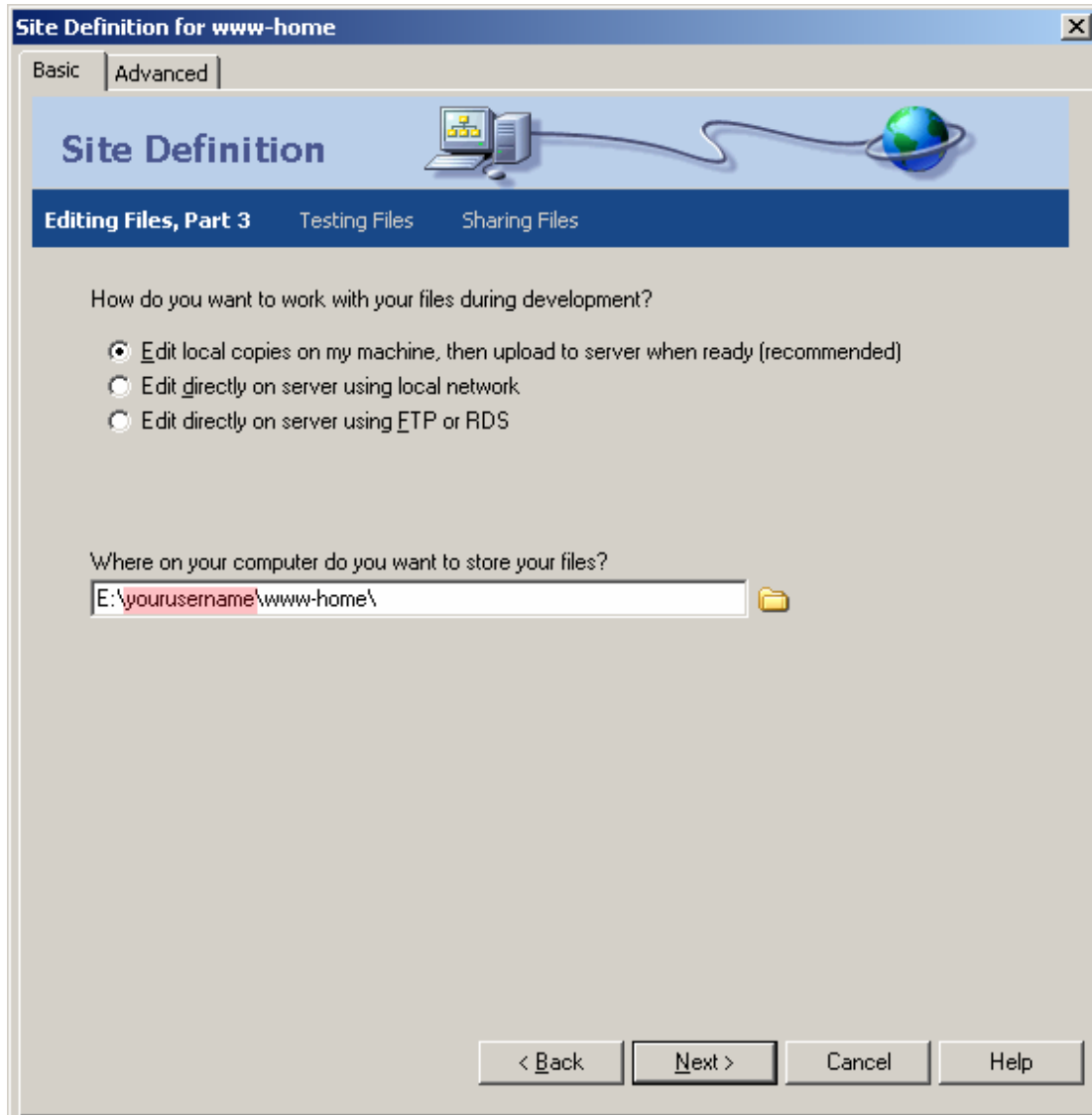




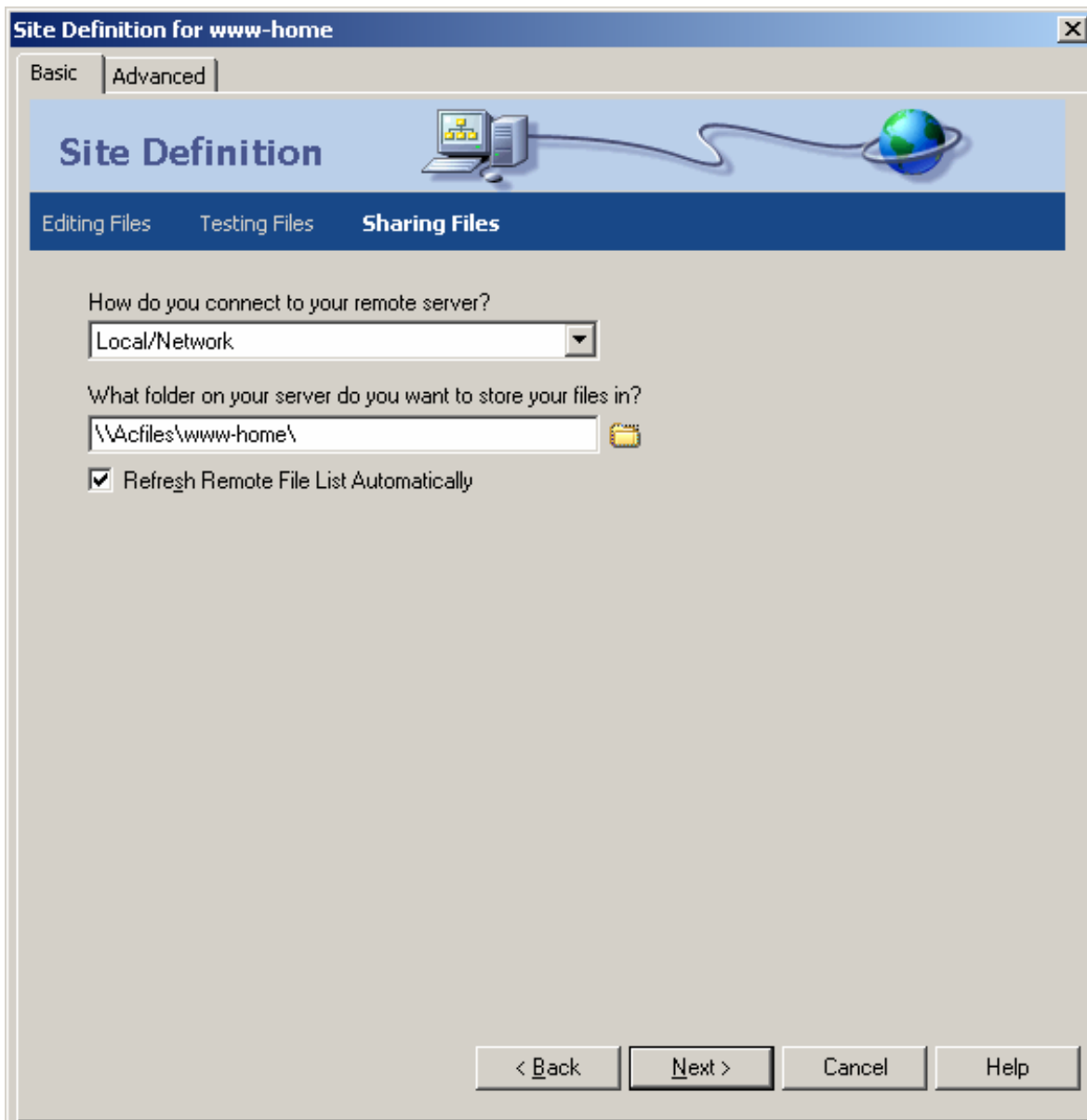
Using this name reflects the folder name where files on the server will go



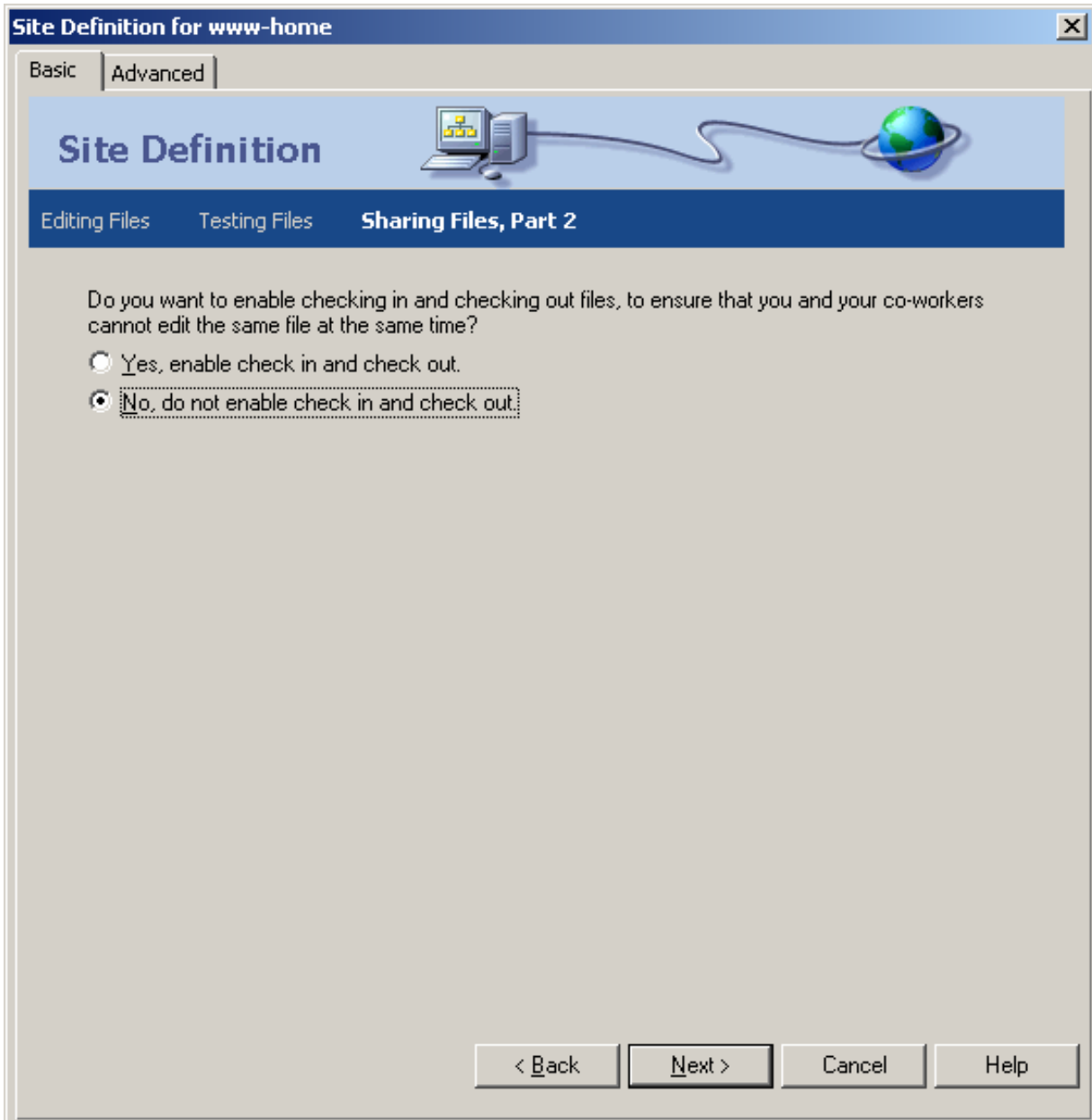
A simple site such as the one you will likely be making won't need high end server technology.



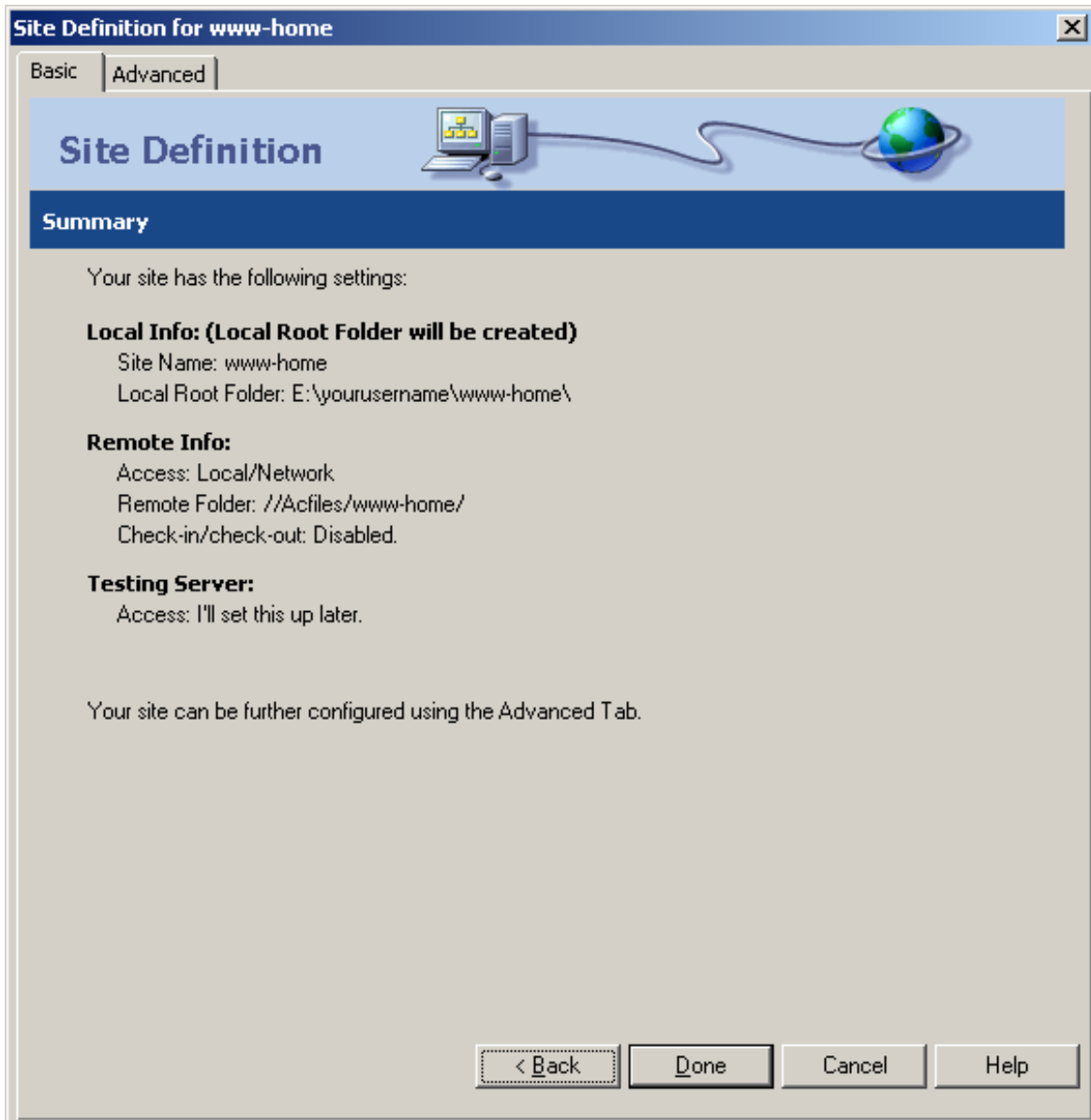
This is the location of the folders made earlier.



This is the same for everybody! Correct login to campus network will insure files go to your personal part of the server



You will be the only one working on this site. Sharing is not suggested



YOU'RE DONE!

The opening page is ALWAYS named:

index.htm

or

index.html

Either extension is acceptable, pick one and stick to it for all the pages in your site.

Save it to www-home.